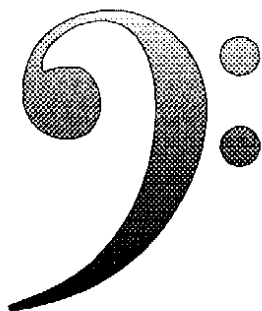


70. ЛУТОВКО

СЕМЬ НОТ

Сорбениано

**Упражнения для изучения
басового ключа
начинающими музыкантами**

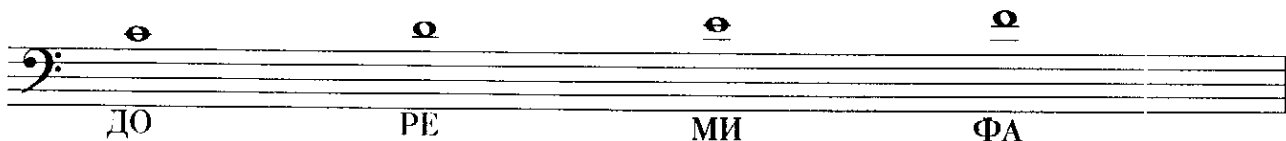


ИЗУЧЕНИЕ БАСОВОГО КЛЮЧА (КЛЮЧ "ФА")

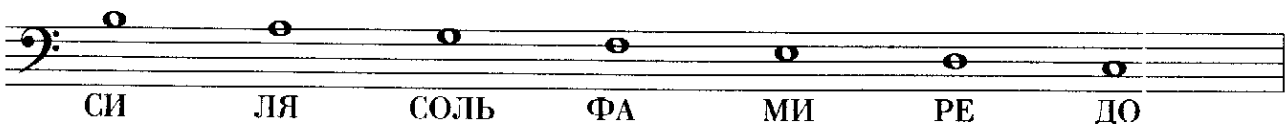
На первом этапе обучения игры на фортепиано некоторым детям трудно дается изучение нот в басовом ключе (ключ "ФА"). Некоторые педагоги сразу дают оба ключа, но если ребенок мал, можно постепенно вводить ноты басового регистра. Сборник "СЕМЬ НОТ" написан в басовом ключе и охватывает диапазон звуков от первой октавы до субконтроктавы. До этого ученик уже знает ноты в скрипичном ключе, переиграл большое количество пьес и его руки свободны. Если левая рука не вполне свободна, можно начинать игру упражнений с приема нон легато (не связно). Темп игры не быстрый. Для лучшего усвоения названия нот обязательно говорить вслух. При игре следить за правильной посадкой и положением левой руки (кисть свободная, локоть приподнят, пальцы округлые и не прогибаются в первой фаланге). Желаю юному музыканту быстро освоить ноты в басовом ключе.

Ю. Литовко

ПЕРВАЯ ОКТАВА



МАЛАЯ ОКТАВА



БОЛЬШАЯ ОКТАВА



УПРАЖНЕНИЯ ДЛЯ ЛЕВОЙ РУКИ

Все упражнения играть, называя ноты вслух

1. Ноты ДО-РЕ-МИ первой октавы в басовом ключе.

Exercise 1 consists of seven staves of music in bass clef and 4/4 time. The notes are C2, D2, E2, C2, D2, E2, C2, D2, E2, C2, D2, E2, C2, D2, E2, C2, D2, E2, C2, D2, E2. The first three staves show the scale in groups of three notes with slurs and breath marks (V). The fourth staff shows the scale in groups of four notes with slurs and breath marks (V). The fifth and sixth staves show the scale in groups of five notes with slurs and breath marks (V). The seventh staff shows the scale in groups of six notes with slurs and breath marks (V).

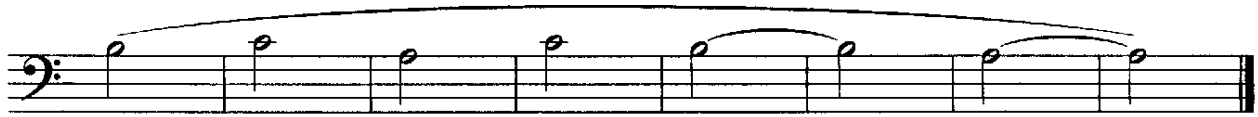
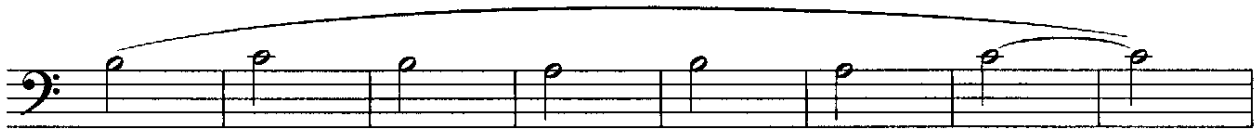
2.

Exercise 2 consists of three staves of music in bass clef and 2/4 time. The notes are C2, D2, E2, C2, D2, E2, C2, D2, E2, C2, D2, E2, C2, D2, E2, C2, D2, E2, C2, D2, E2. The first staff shows the scale in groups of three notes with slurs and breath marks (V). The second staff shows the scale in groups of four notes with slurs and breath marks (V). The third staff shows the scale in groups of five notes with slurs and breath marks (V).

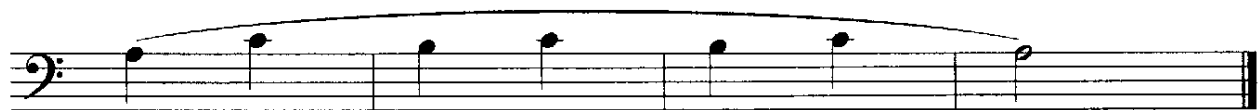
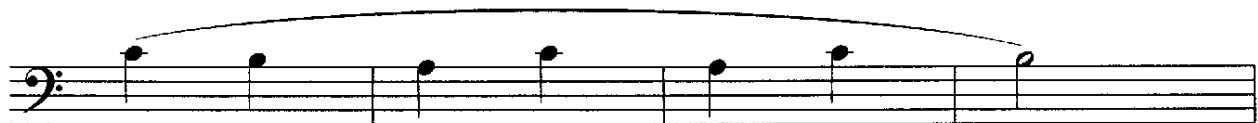
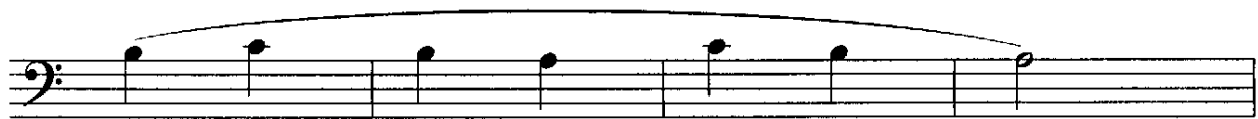
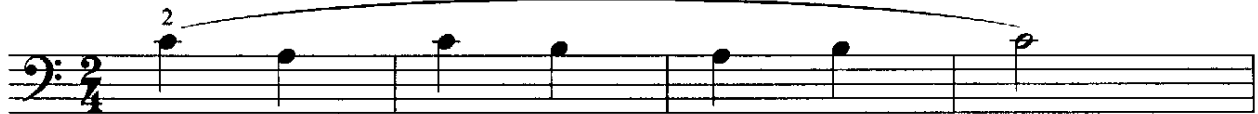
3. Ноты ДО-РЕ-МИ-ФА первой октавы в басовом ключе.

4. Ноты ДО-РЕ первой октавы и СИ малой октавы.

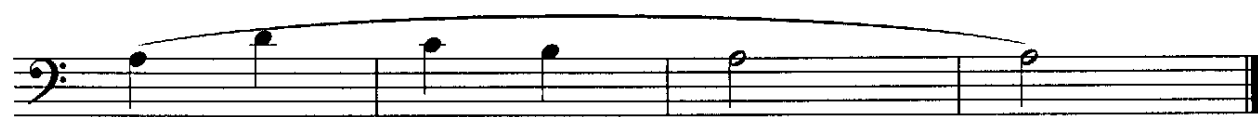
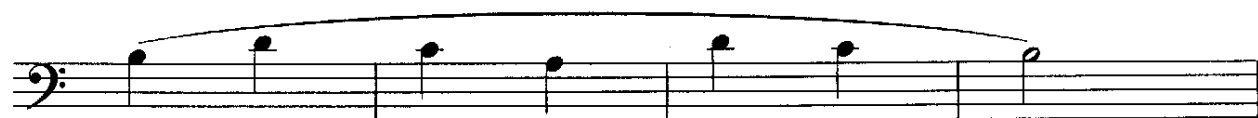
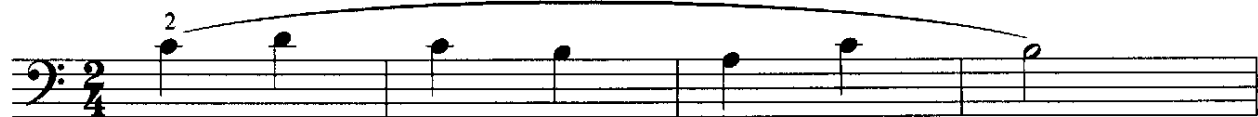
5. Ноты ДО первой октавы и СИ-ЛЯ малой октавы.



6.



7. Ноты ДО-РЕ первой октавы и ЛЯ-СИ малой октавы



8. Ноты ДО первой октавы и СИ-ЛЯ-СОЛЬ малой октавы

Exercise 8 consists of four measures of music in bass clef, 4/4 time. The notes are: C2, D2, E2, F2, G2, A2, B2, C3. The first measure contains the first seven notes (C2-G2) with a slur and a '1' above the first note. The second measure contains the last two notes (A2-B2) with a slur. The third measure contains the first seven notes (C2-G2) with a slur and a '4' above the first note. The fourth measure contains the last two notes (A2-B2) with a slur.

9.

Exercise 9 consists of six measures of music in bass clef, 4/4 time. The notes are: C2, D2, E2, F2, G2, A2, B2, C3. The first measure contains the first seven notes (C2-G2) with a slur and a '1' above the first note. The second measure contains the last two notes (A2-B2) with a slur. The third measure contains the first seven notes (C2-G2) with a slur. The fourth measure contains the last two notes (A2-B2) with a slur. The fifth measure contains the first seven notes (C2-G2) with a slur. The sixth measure contains the last two notes (A2-B2) with a slur.

10. Ноты СИ-ДО диэз-РЕ

3

11. Ноты СИ-ДО диэз-РЕ-МИ

4

12. Ноты ЛЯ-СИ-ДО

3(4)

13. Ноты ЛЯ-СИ-ДО-РЕ



14.



15. НОТЫ ЛЯ-СИ-ДО-РЕ-МИ

16.

17. НОТЫ СОЛЬ-ЛЯ-СИ бемоль

18.

Exercise 18 consists of three staves of music in bass clef, 3/4 time. The first staff begins with a '4' above the first note. The melody is composed of quarter notes, with slurs and flats (b) indicating specific notes and intervals.

19. Ноты СОЛЬ-ЛЯ-СИ бемоль-ДО

Exercise 19 consists of three staves of music in bass clef, 2/4 time. The first staff begins with a '4' above the first note. The melody is composed of quarter notes, with slurs and flats (b) indicating specific notes and intervals.

20.

Exercise 20 consists of four staves of music in bass clef, 2/4 time. The first staff begins with a '4' above the first note. The melody is composed of quarter notes, with slurs and flats (b) indicating specific notes and intervals.

21. Ноты СОЛЬ-ЛЯ-СИ бемоль-ДО-РЕ

2/4

22. Ноты ФА-СОЛЬ-ЛЯ бемоль

2/4

23. Ноты ФА-СОЛЬ-ЛЯ-СИ бемоль

2/4

24. Ноты ФА-СОЛЬ-ЛЯ-СИ бемоль-ДО

24. Ноты ФА-СОЛЬ-ЛЯ-СИ бемоль-ДО

25.

25.

26.

26.

27. Ноты МИ-ФА диэз-СОЛЬ

Musical notation for exercise 27, featuring a triplet of eighth notes (F#, G, A) and a final double bar line.

28. Ноты МИ-ФА диэз-СОЛЬ-ЛЯ

Musical notation for exercise 28, featuring a group of four eighth notes (F#, G, A, B) and a final double bar line.

29. Ноты МИ-ФА диэз-СОЛЬ-ЛЯ-СИ

Musical notation for exercise 29, featuring a group of five eighth notes (F#, G, A, B, C) and a final double bar line.

30.

Exercise 30 is a bass clef piece in 4/4 time, key of D major. It consists of five staves of music. The first staff begins with a '5' above the first note. The music is composed of eighth and quarter notes, many of which are beamed together. Long slurs are used to group notes across several measures, indicating a continuous melodic line.

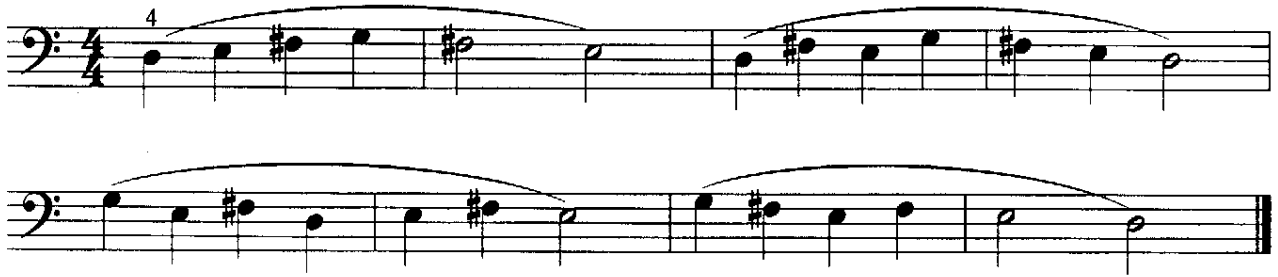
31.

Exercise 31 is a bass clef piece in 4/4 time, key of D major. It consists of three staves of music. The first staff starts with a '5' above the first note, and the second staff has a '1' above the first note. The music consists of eighth and quarter notes, with long slurs indicating a continuous melodic line.

32. Ноты РЕ-МИ-ФА диез

Exercise 32 is a bass clef piece in 2/4 time, key of D major. It consists of two staves of music. The first staff starts with a '4' above the first note. The music features eighth notes with sharp signs, representing the 'Re-Mi-Fa diez' sequence. Long slurs are used to group notes across measures.

33. Ноты РЕ-МИ-ФА диез-СОЛЬ



34. Ноты РЕ-МИ-ФА диез-СОЛЬ-ЛЯ

Exercise 34 consists of seven staves of music in bass clef, 4/4 time. The first staff begins with a slur over five measures, with a fingering '5' above the first note. The notes are: D4 (half), E4 (half), F#4 (quarter), G4 (quarter), F#4 (quarter), E4 (quarter), D4 (quarter). The second staff continues with a slur over five measures: D4 (half), E4 (half), F#4 (quarter), G4 (quarter), F#4 (quarter), E4 (quarter), D4 (quarter). The third staff continues with a slur over five measures: D4 (half), E4 (half), F#4 (quarter), G4 (quarter), F#4 (quarter), E4 (quarter), D4 (quarter). The fourth staff continues with a slur over five measures: D4 (half), E4 (half), F#4 (quarter), G4 (quarter), F#4 (quarter), E4 (quarter), D4 (quarter). The fifth staff continues with a slur over five measures: D4 (half), E4 (half), F#4 (quarter), G4 (quarter), F#4 (quarter), E4 (quarter), D4 (quarter). The sixth staff continues with a slur over five measures: D4 (half), E4 (half), F#4 (quarter), G4 (quarter), F#4 (quarter), E4 (quarter), D4 (quarter). The seventh staff concludes with a slur over five measures: D4 (half), E4 (half), F#4 (quarter), G4 (quarter), F#4 (quarter), E4 (quarter), D4 (quarter). The piece concludes with a double bar line.

35.

35. Musical notation for exercise 35, consisting of four staves of bass clef music in 3/4 time. The first staff starts with a '5' above the first note. The second staff starts with a '2' above the first note. The music consists of eighth and quarter notes with slurs and accents.

36. Ноты ДО-РЕ-МИ

36. Ноты ДО-РЕ-МИ. Musical notation for exercise 36, consisting of three staves of bass clef music in 4/4 time. The first staff starts with a '3' above the first note. The music consists of quarter notes with slurs.

37. Ноты ДО-РЕ-МИ-ФА

37. Ноты ДО-РЕ-МИ-ФА. Musical notation for exercise 37, consisting of four staves of bass clef music in 4/4 time. The first staff starts with a '4' above the first note. The music consists of quarter notes with slurs.

38.

Exercise 38 consists of four staves of music in bass clef, 2/4 time. The first staff begins with a '4' above the first note. The second staff ends with a 'V' above the final note. Each staff contains a sequence of notes connected by a slur.

39. НОТЫ ДО-РЕ-МИ-ФА-СОЛЬ

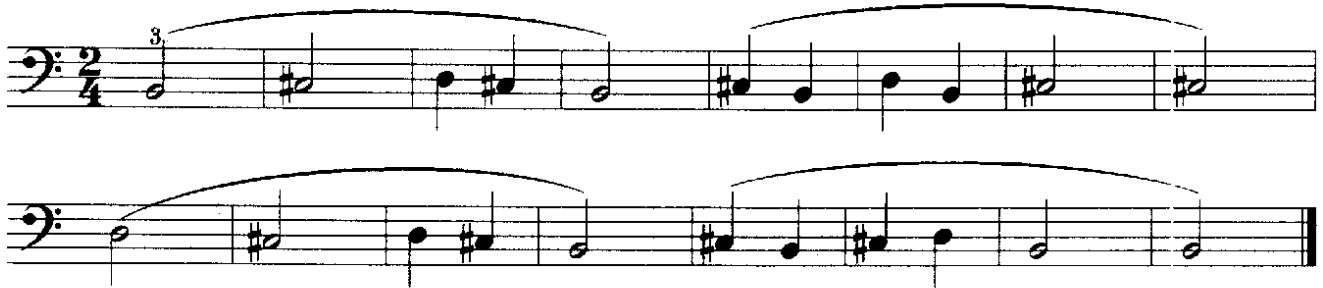
Exercise 39 consists of four staves of music in bass clef, 4/4 time. The first staff has a '5' above the first note and a '3' above the first note of the second measure. Each staff contains a sequence of notes connected by a slur.

40

41.

42. Ноты СИ большой октавы, ДО диэз-РЕ малой октавы

43.



44. Ноты СИ большой октавы, ДО диэз-РЕ-МИ малой октавы

45. Ноты ЛЯ-СИ большой октавы, ДО малой октавы

46. Ноты ЛЯ-СИ-ДО-РЕ

47. Ноты ЛЯ-СИ-ДО-РЕ-МИ

48.

49. Ноты СОЛЬ-ЛЯ-СИ большой октавы

3

50. Ноты СОЛЬ-ЛЯ-СИ большой октавы, ДО малой октавы

4

1

3

51.

4

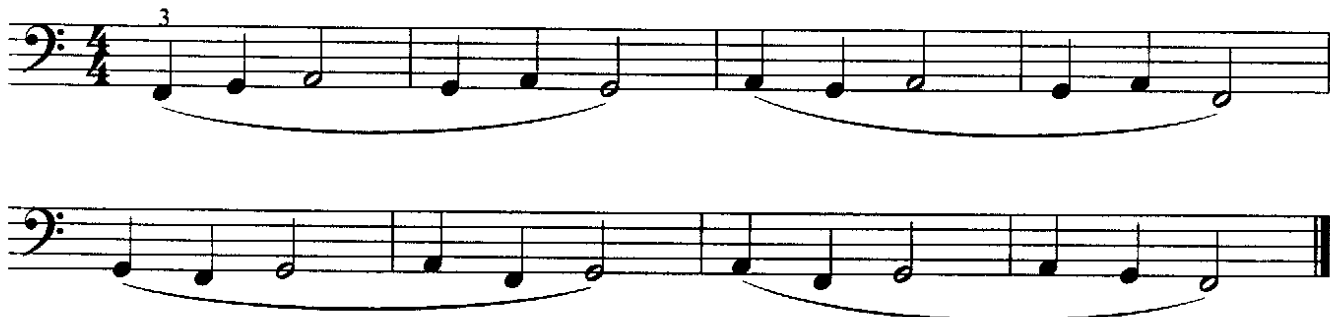
52. НОТЫ СОЛЬ-ЛЯ-СИ-ДО-РЕ



53.



54. НОТЫ ФА-СОЛЬ-ЛЯ БОЛЬШОЙ ОКТАВЫ



55. Ноты ФА-СОЛЬ-ЛЯ-СИ бемоль большой октавы



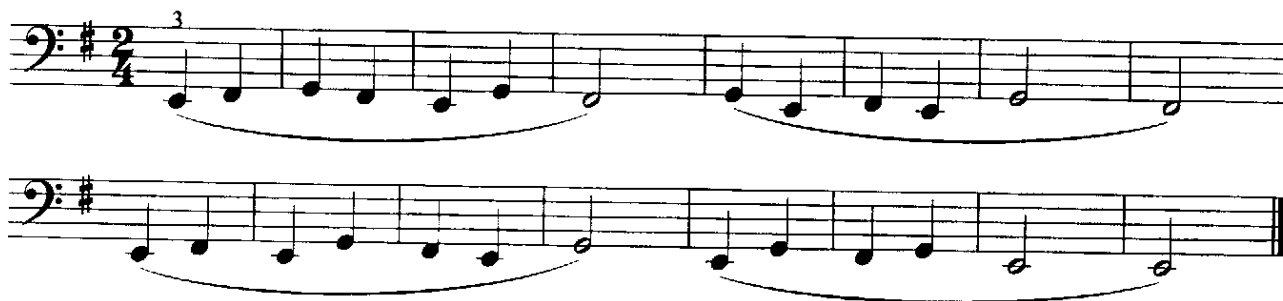
56. Ноты ФА-СОЛЬ-ЛЯ-СИ бемоль-ДО



57.



58. Ноты МИ-ФА диез-СОЛЬ большой октавы



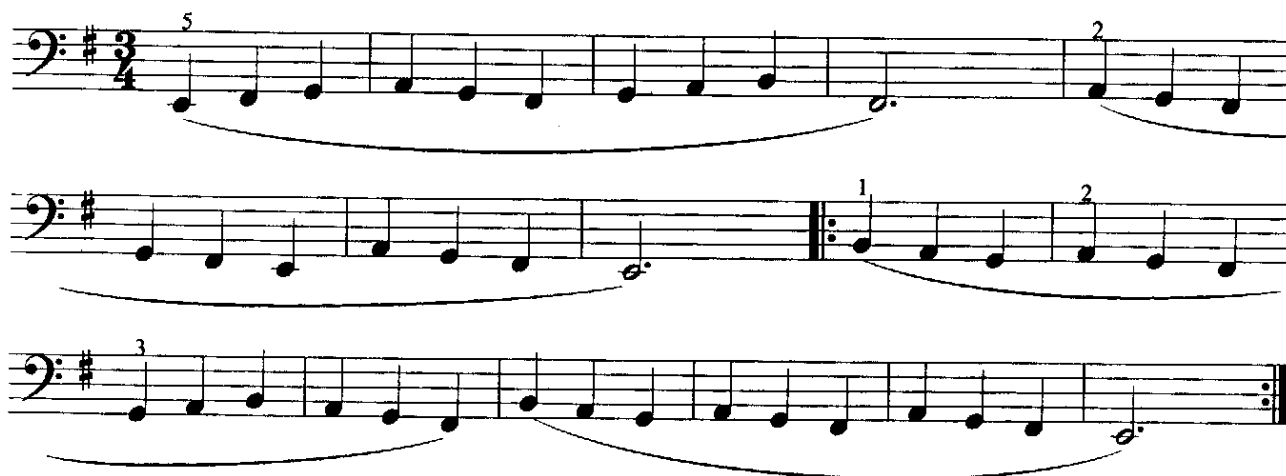
59. Ноты МИ-ФА диез-СОЛЬ-ЛЯ



60. Ноты МИ-ФА диез-СОЛЬ-ЛЯ-СИ



61.



62. Ноты РЕ-МИ-ФА большой октавы

62. Ноты РЕ-МИ-ФА большой октавы

63.

63.

64.

64.

Упражнения от ноты ДО большой октавы

65. Ноты ДО-РЕ-МИ

Exercise 65 consists of two staves of music in bass clef, 2/4 time. The first staff begins with a triplet of eighth notes (labeled '3') and a quarter note, followed by a slur over the next six notes. The second staff begins with a quarter note and a slur over the next six notes. The exercise covers the notes DO, RE, MI in the large octave.

66. Ноты ДО-РЕ-МИ-ФА

Exercise 66 consists of two staves of music in bass clef, 2/4 time. The first staff begins with a quartet of eighth notes (labeled '4') and a quarter note, followed by a slur over the next six notes. The second staff begins with a quarter note and a slur over the next six notes. The exercise covers the notes DO, RE, MI, FI in the large octave.

67. Ноты ДО-РЕ-МИ-ФА-СОЛЬ

Exercise 67 consists of four staves of music in bass clef, 4/4 time. The first staff begins with a quintet of eighth notes (labeled '5') and a quarter note, followed by a slur over the next six notes. The second staff begins with a quarter note and a slur over the next six notes. The third and fourth staves continue the exercise with slurs over groups of notes. The exercise covers the notes DO, RE, MI, FI, SOL in the large octave.